

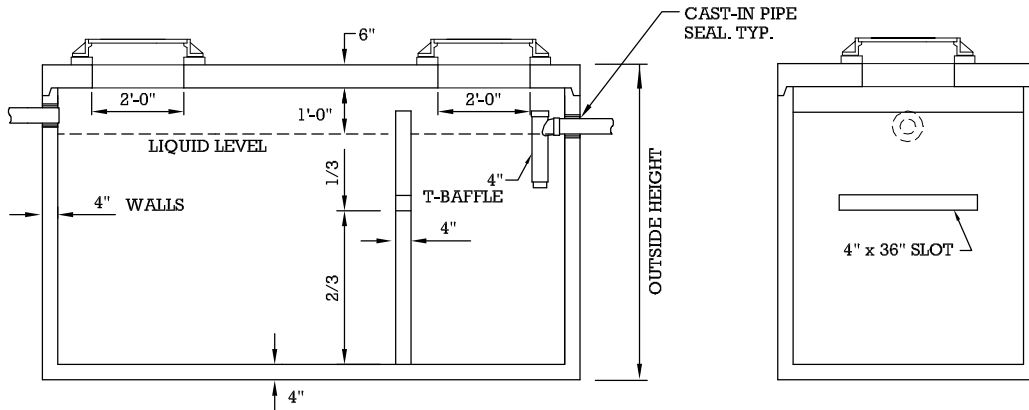
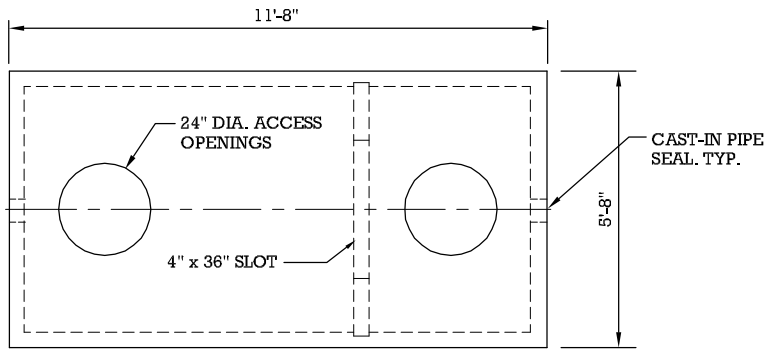
# JEFFERSON CONCRETE CORP.

22850 COUNTY ROUTE 51  
 WATERTOWN, NY 13601  
 TEL(315)788-4171 FAX(315)788-7958

## PRODUCT DESCRIPTION

1,000 GALLON SEPTIC TANK DETAIL

CAPACITY	OUTSIDE HEIGHT	INLET LEVEL	LIQUID HEIGHT	OUTLET HEIGHT
1000	52"	37"	30"	34"



### GENERAL NOTES:

- CONCRETE TO BE MIN. 5,000 PSI @ 28 DAYS
- ENTRAINED AIR 5%-8%
- STEEL ASTM A497/A615 GRADE 60
- BUILT IN ACCORDANCE TO ASTM C-1227/C-913 (300 PSF)
- CONSTRUCTION JOINT - SEALED WITH 7/8" DIA. BUTYL SEALANT
- PIPES CONNECTED TO TANK WITH KOR-N-SEAL CONN. (OPTIONAL)

UPDATED 11/26/19