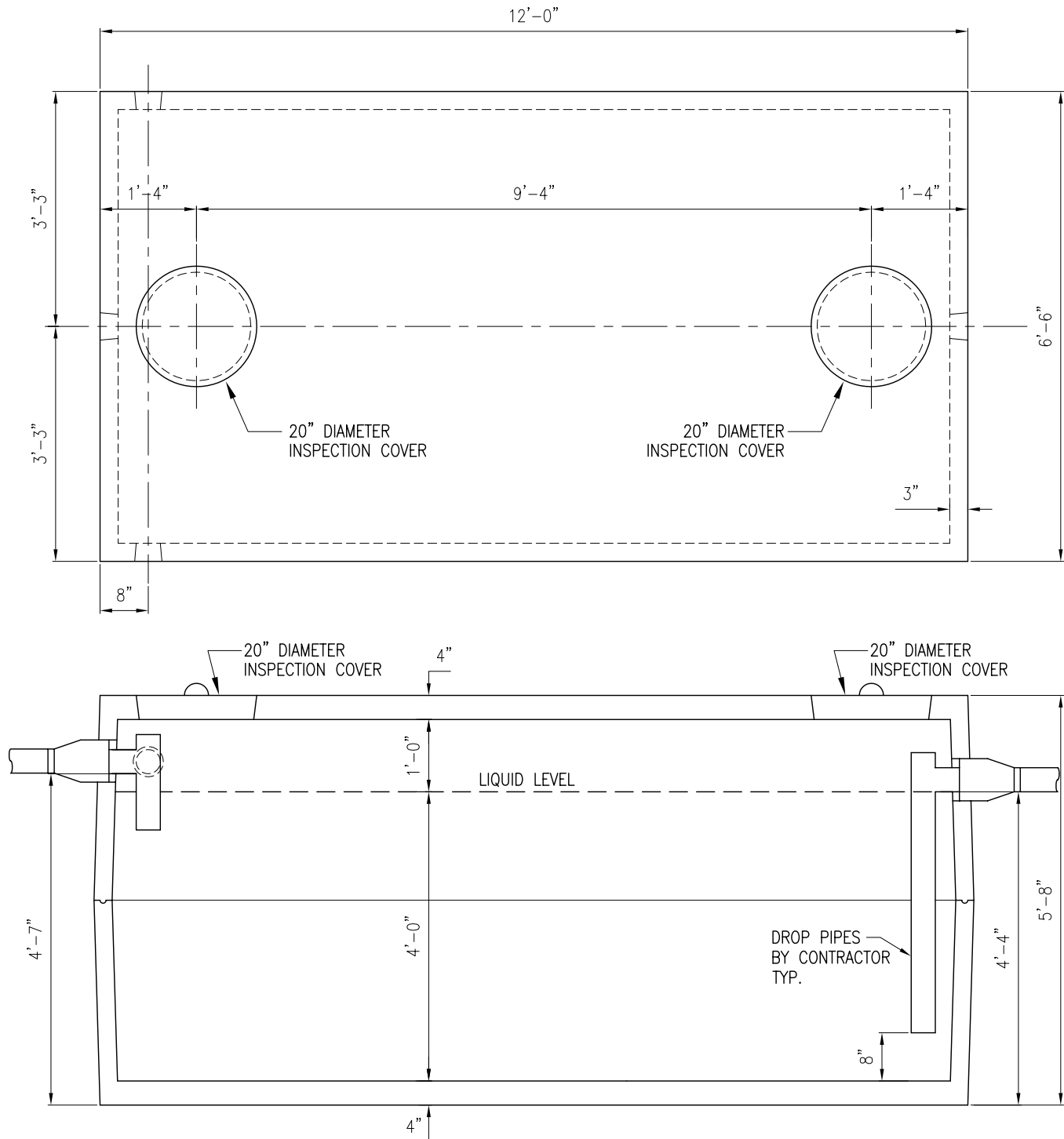


# JEFFERSON CONCRETE CORP.

22850 MURROCK CIRCLE  
WATERTOWN, NY 13601  
TEL (315)788-4171 FAX (315)788-7958  
www.jeffersonconcrete.com

## 2,000 GALLON NON-TRAFFIC RATED GREASE TRAP



### GENERAL NOTES:

- CONCRETE TO BE MIN. 5000 PSI @28 DAYS
- ENTRAINED AIR 5%-8%
- STEEL REINFORCEMENT- ASTM A-615 GRADE 60
- STEEL COVER MIN. 1"
- BUILT IN ACCORDANCE TO ASTM C-1227/ C-913 (300 PSF)

WJL 11/12/14