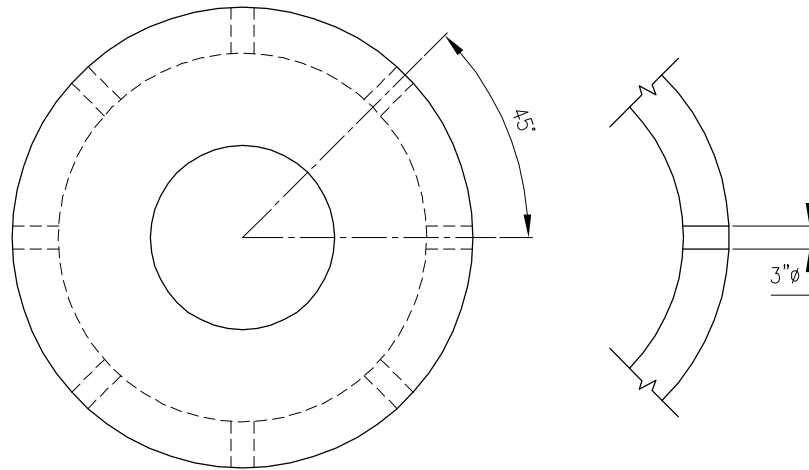


JEFFERSON CONCRETE CORP.

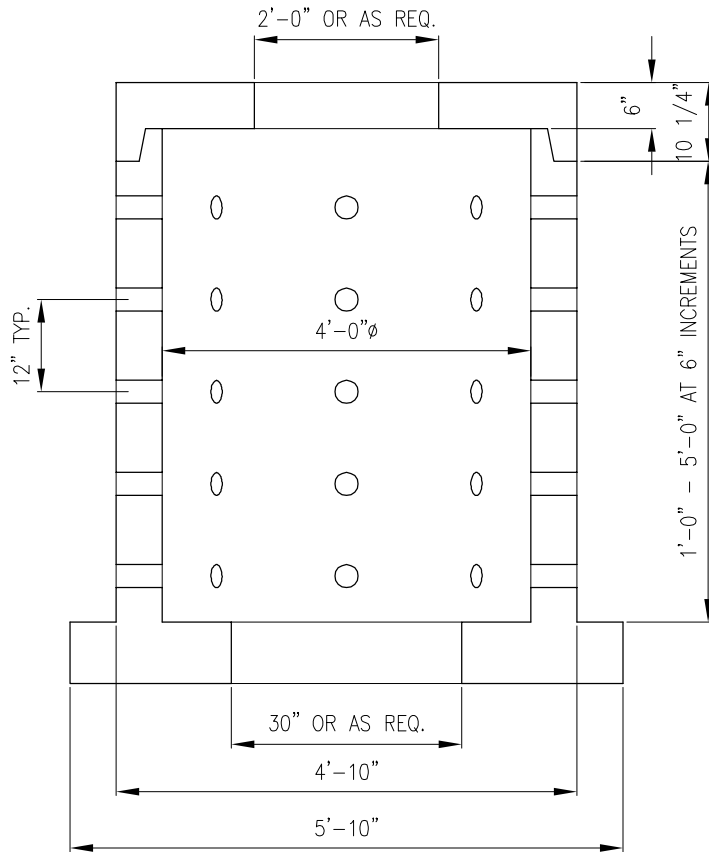
22850 COUNTY ROUTE 51
WATERTOWN, NY 13601
TEL (315)788-4171 FAX (315)788-7958
www.jeffersonconcrete.com

48" DIAMETER DRYWELL



TOP VIEW

- OPENING IN COVER AS REQUIRED
- CASTING AS REQUIRED
- HOLES FOR PIPES CORED OR CAST AS REQUIRED
- HOLE IN BASE AS REQUIRED



SECTION

GENERAL NOTES:

BUILT IN ACCORDANCE TO ASTM C478
REINFORCEMENT STEEL ASTM A497 GRADE 60 WWF
CONCRETE TO BE MIN. 5000 PSI @ 28 DAYS
AIR ENTRAINED 5%-8%
INVERT LOCATION AND SIZE AS PER PLANS

UPDATED 10/09/19