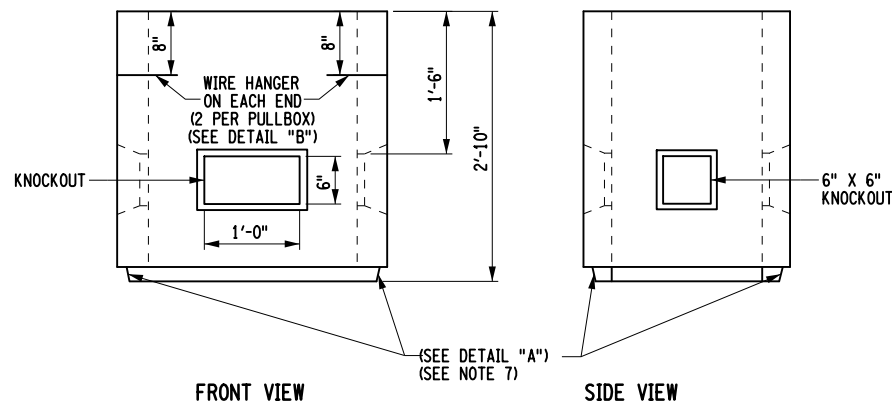


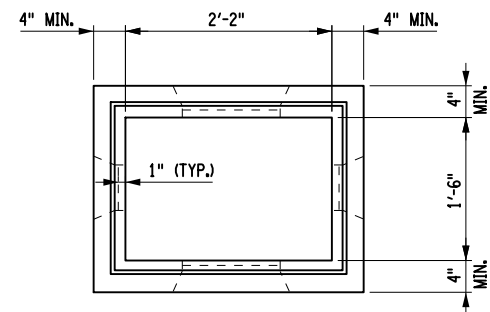
TOP VIEW



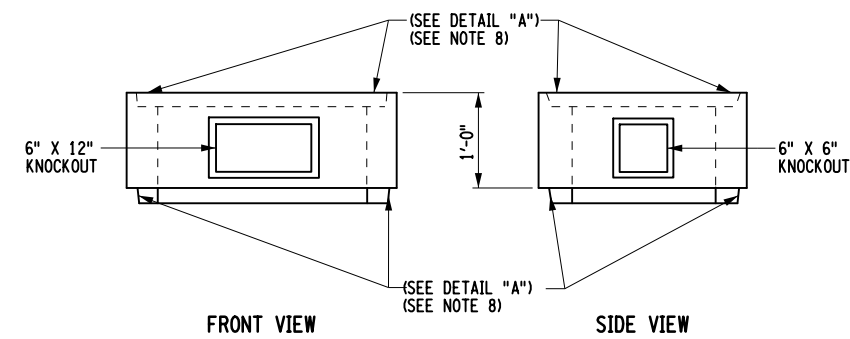
FRONT VIEW

SIDE VIEW

REINFORCED CONCRETE RECTANGULAR PULLBOX
MINIMUM VERTICAL AND HORIZONTAL
REINFORCEMENT .12 SQ. IN. / FT. (SEE NOTE 10)
INSIDE VOLUME 8.2 CUBIC FEET WITHOUT EXTENSION



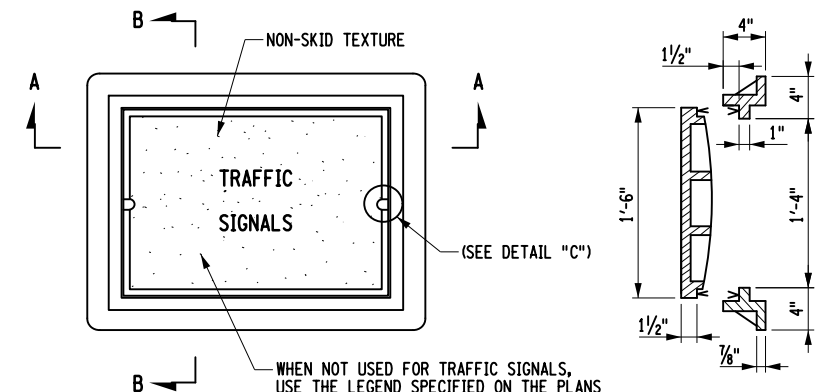
TOP VIEW



FRONT VIEW

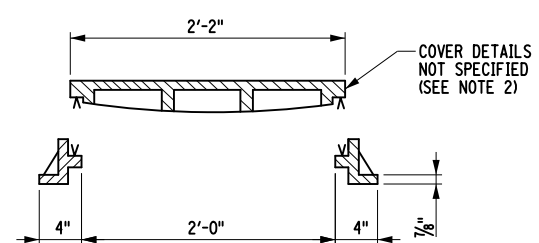
SIDE VIEW

EXTENSION FOR RECTANGULAR PULLBOX
MINIMUM VERTICAL AND HORIZONTAL
REINFORCEMENT .12 SQ. IN. / FT. (SEE NOTE 10)
VOLUME EXTENSION 2.9 CUBIC FEET

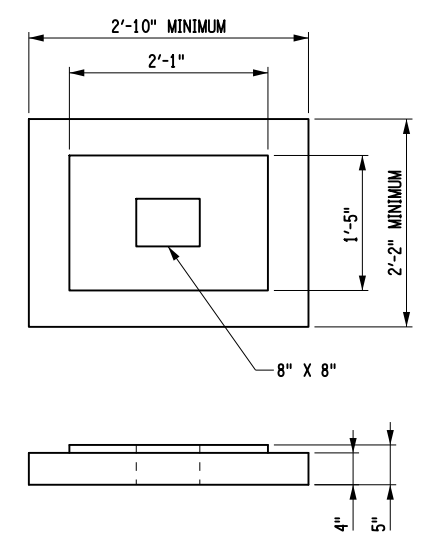


TOP VIEW

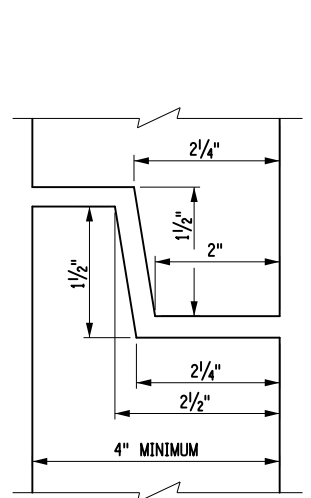
SECTION B-B



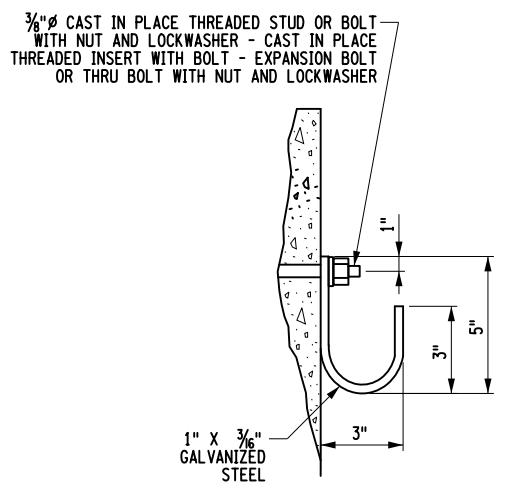
SECTION A-A
CAST IRON FRAME AND COVER
FOR RECTANGULAR PULLBOX
APPROXIMATE WEIGHT 300 LBS.



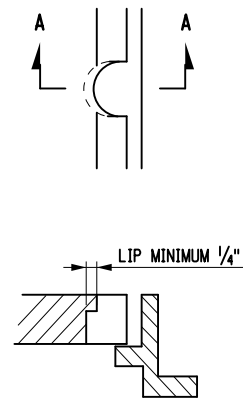
RECTANGULAR PULLBOX BASE
MINIMUM VERTICAL AND HORIZONTAL
REINFORCEMENT .12 SQ. IN. / FT. (SEE NOTE 10)



JOINT DETAIL
DETAIL "A"



WIRE HANGER
DETAIL "B"



SECTION A-A

LIFTING NOTCH
DETAIL "C"
(OR EQUAL AS APPROVED
BY THE ENGINEER)

NOTES:

- STANDARD KNOCKOUT LOCATIONS ARE SHOWN FOR EACH PULLBOX. THE CONTRACTOR MAY ALSO ELECT TO FURNISH PULLBOXES WITH ONLY THE NUMBER AND SIZE CONDUIT OPENINGS THAT ARE REQUIRED FOR THAT PARTICULAR INSTALLATION.
- FRAMES AND COVERS SHALL BE HEAVY DUTY TO SUPPORT AN HS-20 WHEEL LOADING.
- PULLBOX COVERS MAY BE DESIGNED WITH OR WITHOUT RIBS.
- A NON-SKID TEXTURE SHALL BE CAST INTO THE TOP SURFACE OF THE COVER.
- PULLBOX BASES ARE REQUIRED ONLY FOR PULLBOXES PLACED IN THE PAVEMENT OR SHOULDER AND AS INDICATED ON THE PLANS. BASES, WHEN REQUIRED, MAY BE CAST INTEGRAL WITH THE PULLBOX.
- A ROUGH FINISH IS ACCEPTABLE FOR PULLBOX KNOCKOUTS.
- THE CONTRACTOR MAY ELECT TO FURNISH PULLBOXES PRECAST TO GREATER DEPTH, IN 1'-0" INCREMENTS INSTEAD OF USING EXTENSIONS.
- WHERE PULLBOXES ARE INTENDED FOR USE WITHOUT EXTENSIONS, THE JOINT SHOWN IN DETAIL "A" MAY BE OMITTED.
- SEE STANDARD SHEET TITLED "PULLBOX, CONDUIT, AND GROUND ROD INSTALLATION DETAILS".
- STEEL REINFORCEMENT SHALL BE PLACED WITHIN THE CENTER THIRD OF THE WALL, EXCEPT KNOCKOUTS. MINIMUM COVER SHALL BE 1".

STATE OF NEW YORK DEPARTMENT OF TRANSPORTATION	
U.S. CUSTOMARY STANDARD SHEET	
PRECAST STANDARD RECTANGULAR PULLBOXES, FRAMES AND COVERS	
APPROVED JUNE 21, 2011	ISSUED UNDER EB 11-013
/S/ RICHARD W. LEE P.E. DEPUTY CHIEF ENGINEER DESIGN (ACTING)	680-02

EFFECTIVE DATE: 01/12/2012

FILE NAME = 680-02_011212.dgn
DATE/TIME = 23-JUN-2011 12:02
USER = rlohse