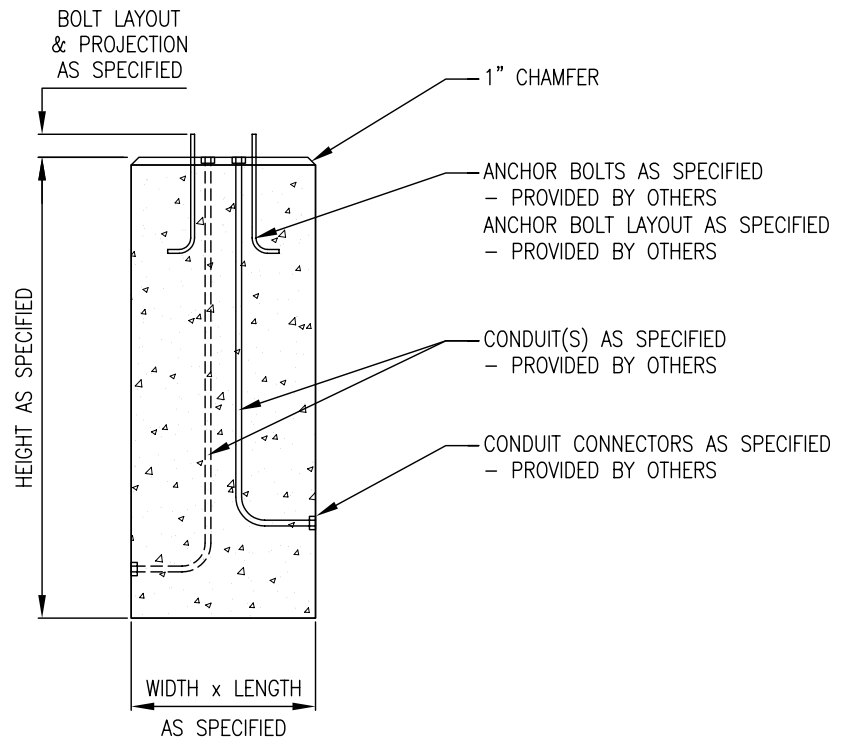
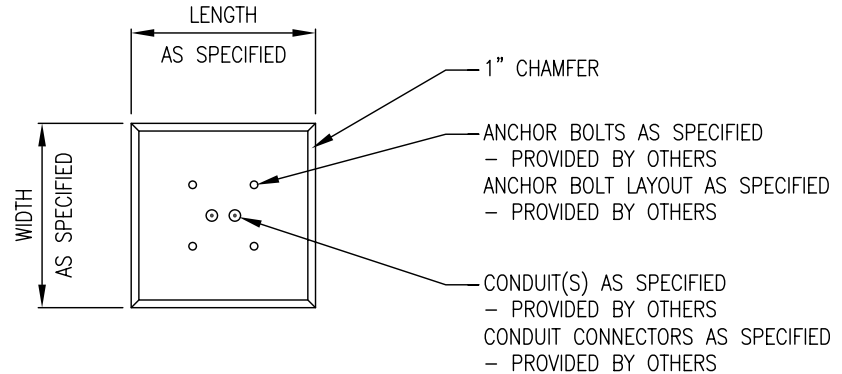


JEFFERSON CONCRETE CORP.

22850 MURROCK CIRCLE
WATERTOWN, NY 13601
TEL (315)788-4171 FAX (315)788-7958
www.jeffersonconcrete.com

SQUARE LIGHT POLE BASE



GENERAL NOTES:

CONCRETE TO BE MIN. 5000 PSI @ 28 DAYS
AIR ENTRAINED 5%-8%
REINFORCEMENT TO BE AS SPECIFIED
ANCHOR BOLTS AND LAYOUT AS SPECIFIED AND PROVIDED BY OTHERS
CONDUITS AND CONNECTORS AS SPECIFIED AND PROVIDED BY OTHERS

UPDATED 03/28/10